



NEWSLETTER
Issue XXI (May-Aug 2019)



A painting by Cedric Morris

Town Lectures & Concerts

These lunchtime meetings take place once a month at Museum Street Methodist Church, Ipswich, starting at 1.00pm. Admission is free, but a donation at the end helps to meet expenses. A minimum of £2 is suggested.

9 May: Lecture. Diana Grace talks about the artist and plantsman Cedric Morris who moved to Suffolk in 1930.

13 June: Concert by The Suffolk Poetry Society. Readings from *The Ruba'iyat of Omar Khayyam*, accompanied by music from harpist Virginia Roidiere.

11 July: Lecture. At The Overseer's Door. Ray Whitehead describes parish workhouses in Suffolk between the 1570s and the 1834 Poor Law Amendment Act.

8 Aug: Concert. Zephyr Baroque. Music from c1700-1750 featuring Liz Alexander – recorder, Geraldine Taylor – harpsichord and Karen Bainbridge – baroque bassoon.

Hello, hello, hello!

Ipswich Arts Association is delighted to welcome their newest member society, the Suffolk Constabulary Male Voice Choir. For the past 50 years the choir has been singing a wide variety of music, and has raised thousands of pounds for local causes. They must be good at following the beat!

Ipswich Maritime Festival

We're planning to have a stall at this year's Maritime Festival on Ipswich Waterfront. This lively event attracts in the region of 70,000 visitors and will be taking place on the weekend of 17 -18 August. A great opportunity then for IAA groups to promote activities and events! We shall also need 12 volunteers to set up and look after the display for an hour on one of the two days. If your organisation wishes to contribute material for display and/or can provide a volunteer please e-mail secretary@ipswich-arts.org.uk (Subject: Maritime Festival) by 31st May.
Pat Grimwade

Orff's On

Come and join Chairperson of Ipswich Arts Association, Professor Chris Green as he gives a talk on Saturday 22 June starting at 10am at the Ipswich Institute. *The Ever-turning Wheel of Fortune* focuses on the life and work of Bavarian Carl Orff, composer of *Carmina Burana*. Chris will be conducting a performance of the work at Snape Maltings on 14 September, and this study workshop is designed to explore the background not only to the work – described by some as one of "the world's loudest pieces of music", but also to its companion pieces. The event is open to the public, and tickets are on sale now from the Ipswich Institute (01473 253992).

Musical Director Wanted!

Gloria Wilson, Musical Director of The Orwell Singers, will be retiring from conducting the choir after 22 years. Her last concert as MD of the Ipswich based ladies choir will be on 1 June at St Michael and All Angels Church, Martlesham Heath. The group are actively looking to find a new MD to build on the wonderful work that Gloria has carried out. For more details of the Musical Director post contact d.sharman@btinternet.com.

Going Solo

Whether you are working in the visual arts, creative writing, music or drama – in fact, any form of the arts – Ipswich Arts Association would welcome you as a member. The Association has recently re-established a membership category for solo artists and a year's subscription will cost £10 per person. In fact, the initial subscription extends to the end of the financial year 2019-20 so it is even better value. For further information contact the IAA Secretary (01473 614456).

Copy Deadline For IAA Newsletter

Friday 2 August is the final date to send copy for the 2019 September to December IAA newsletter. Please email copy to: rp.puzzlehouse@btinternet.com



Meet Maggie

Maggie Powell has joined the IAA as a Trustee. She introduces herself...

A Contemporary Dance graduate, I spent a large part of my working life as a recruitment consultant for local companies until the opportunity arose in 2008 to join the DanceEast team. After initially working in Development, I then moved to revenue fundraising. My current role, within the Operations team, involves

diary management for all the spaces within the building, generating revenue (to annual targets) through hires income and, recently, developing the use of our Whistler Gallery as an exhibition space for local artists.

I have lived and worked in Ipswich for over 24 years, during which time my family and I have enjoyed the great variety of Arts and Culture on our doorstep. My children (Tom, Imogen and Will) are now older and pursuing their own interests independently, leaving me with time to begin new projects!

I am aware that we are very lucky to live in a town with such a rich culture on offer but that the current economic and political climate means that the sector faces increasing challenges. I hope that the opportunity to work with the IAA will allow me to contribute in a practical way to the cultural life of my hometown.

Volunteers needed!

Could you spare a few hours to welcome visitors to St Peter's by the Waterfront Church? In addition to welcoming people, volunteers are asked to highlight the information available about the various displays including the Ipswich Charter Hangings. Volunteers are needed on Fridays from May to September, 10am-1pm or 1pm-4pm. If you are interested in helping, even with just one or two sessions, or want more information about what is involved, please contact Ann Cloke on 07715 132591, 01473 230559 or email: ann.cloke@ntlworld.com

Ipswich Charter Hangings

The eight panels that make up the unique Ipswich Charter Hangings represent different periods of history. They are: Viking, Charter, Medieval, Tudor, Stuart, Georgian, Victorian and Modern. The panels are on display in St Peter's by the Waterfront Church which is open to the public during May to September on: Tuesdays 10am – 4pm, Wednesdays 10am – 2pm, Thursdays 10am – 4pm, Fridays 10am – 4pm. In addition, the church is also open at other times for special events such as Ipswich Maritime and Heritage Weekend, and by appointment. If you are planning a special journey, it would be a good idea to phone: 01473 225269, email info@stpetersbythewaterfront.com or check the website: www.stpetersbythewaterfront.com

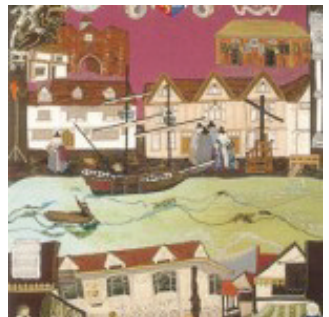
Library Sale

Don't miss the mega music sale in Ipswich County Library on Saturday 11 May, from 10.00am to 4.00pm. Vocal scores from all genres, individual instrument scores, including some tutorials and miniature orchestral scores will be on sale. All items are affordably priced. Alongside the scores we will also be selling film and TV series DVDs. This is a great opportunity to bag a bargain, so make a note in your diary.

Ipswich Music Day 2019

Ipswich Music Day takes place on Sunday 7 July. IAA will be hosting four 'Classical Stages' at this event: Bethesda Baptist Church, The Masonic Hall, St Margaret's Church and the Wolsey Gallery at Christchurch Mansion. Many thanks to all who applied to perform. Applications for this year have now closed and the final programme and timings can be found on the IAA website. Performers as at the time of going to press are:

- Birkbeck Singers
- Co-op Ladies Choir
- Felixstowe Harmonies
- Four Voices
- Ips Choral Society
- Ips Gilbert & Sullivan Society
- Ips Hospital Community Choir
- Musicology
- Shingle Street Folk Band
- Silbury Hill - Folk/Pop duo
- Stellar Acappella
- Martlesham Brass
- Trianon Music Group



what's on

DATE	WHAT	WHERE	TIME	CONTACT
Sat 4 May	Crisium. Planets Reimagined. Concert	St Peter's by the Waterfront IP1 1XF	8.00pm	www.stpetersbythewaterfront.com
Thur 9 May	IAA Lunchtime Lecture	Museum Street, Methodist Church	1.00pm	www.ipswich-arts.org.uk
Sat 11 May	Music sale	Ipswich County Library	10.00am - 4.00pm	Music.Drama.Library@suffolklibraries.co.uk
Sat 11 May	Octave Vocal Ensemble. Concert	Unitarian Meeting House, Bury IP33 1RH	7.30pm	Balaam's Music 01284 766933
Sat 11 May	Gippeswyk Singers. Concert	Snape Maltings, Concert Hall IP17 1SR	7.30pm	01728 687110
Sat 11 May	Suffolk Constab. Male Voice Choir. Concert	Royal Albert Hall, London SW7 2AP	7.30pm	www.royalalberthall.com
Sat 11 May	Trianon Strings & Singers. Concert	St Mary & St Michael's, Mistley CO11 1ER	7.30pm	www.tmg.org.uk
Sat 11 May	Folk Night. Concert	St Peter's by the Waterfront IP1 1XF	7.30pm	www.stpetersbythewaterfront.com
Sat 18 May	Wolsey Orchestra. Concert	Ipswich Corn Exchange IP1 1DH	7.30pm	www.wolseyorchestra.org
Sat 18 May	Community Light Orchestra. Concert	St John's Church, Felixstowe IP11 7PW	7.30pm	www.communitylightorchestra.co.uk
Sat 18 May	Ipswich Bach Choir. Haydn's Creation	St Andrew's Church, Felixstowe IP11 7EB	7.30pm	www.ipswichbachchoir.org.uk
Mon 20 May	Ipswich Film Society. "Taxi Tehran"	Ipswich Corn Exchange IP1 1DH	7.30pm	www.ipswichfilmsociety.org.uk
Fri 24 May	Joanna Eden. Sondheim Concert	St Peter's by the Waterfront IP1 1XF	7.30pm	www.stpetersbythewaterfront.com
Sun 26 May	Lyra. Vocal Ensemble. Concert	St Andrew's Church, Rushmere IP5 1DH	7.00pm	www.rushmerestandrews.wordpress.com
Sat 1 Jun	Ipswich Chamber Choir. Jazz concert	St Andrew's Church, Rushmere IP5 1DH	6.30pm	ipswichchamberchoir@gmail.com
Sat 1 Jun	The Orwell Singers. Concert	St Michael & All Angels, Martlesham IP5 3PL	7.30pm	www.theorwellsingers.co.uk
Sat 8 Jun	Hadleigh Choral Society. Concert	Lavenham Village Hall CO10 9QT	7.30pm	01473 823791
Thur 13 Jun	IAA. Lunchtime Concert	Museum Street, Methodist Church	1.00pm	www.ipswich-arts.org.uk

Sat 15 Jun	Ipswich Choral Society. Concert	TBC, Ipswich	7.30pm	www.ipswichchoralsociety.org
Sat 15 Jun	Stowmarket Chorale. Shakespeare meets Jazz.	Stowmarket United Reform Church IP14 1AD	7.30pm	www.stowmarketchorale.org.uk
Sat 15 Jun	Funky Voices. Concert	St Peter's by the Waterfront IP1 1XF	7.30pm	www.stpetersbythewaterfront.com
Sun 16 Jun	Hadleigh Choral Society. Concert	Deanery Garden, Hadleigh	3.30pm	01473 823791
Sat 22 Jun	Chris Green. Workshop. Carl Orff	Ipswich Institute, 15 Tavern Street	10.00am	01473 253992
Sat 22 Jun	Felixstowe Harmonies. Concert	St Andrew's Church, Felixstowe IP11 7EB	7.30pm	www.felixstoweharmonies.co.uk
Sat 22 Jun	Suffolk Sinfonia. Concert	The Apex, Bury St Edmunds IP33 3FD	7.30pm	www.suffolksinfonia.co.uk
Fri 28/Sat 29/Sun 30 Jun	Felixstowe Musical Theatre. Show	Trimley Memorial Hall IP11 ORJ	7.30pm Fri + 2.30pm Sat/Sun	01394 273274
Sat 29 Jun	Ipswich Symphony Orchestra. Concert	Ipswich Corn Exchange IP1 1DH	7.30pm	www.ipswichsymphonyorchestra.org
Sat 29 Jun	Mozart's Muses. One act drama	St Andrew's Church, Rushmere IP5 1DH	7.30pm	www.rushmerestandrews.wordpress.com
Sat 29 Jun	The Dorian Singers. Concert	Kirton Church Hall IP10 OPT	7.30pm	www.thedoriansingers.org.uk
Fri 5 Jul	Solana. Concert	St Peter's by the Waterfront IP1 1XF	7.30pm	www.stpetersbythewaterfront.com
Sun 7 Jul	IPSWICH MUSIC DAY	Full details of venues and times the IAA website		www.ipswich-arts.org.uk
Thur 11 Jul	IAA. Lunchtime Lecture	Museum Street, Methodist Church	1.00pm	www.ipswich-arts.org.uk
Sun 14 Jul	Cameron Scott. Piano concert	St Andrew's Church, Rushmere IP5 1DH	3.00pm	www.rushmerestandrews.wordpress.com
Fri 19 Jul	Elie Rees. Concert	St Peter's by the Waterfront IP1 1XF	8.00pm	www.stpetersbythewaterfront.com
Sat 20 Jul	Suffolk Constab. Male Voice Choir. Concert	St Mary at Stoke Church IP2 8BX	7.30pm	www.suffolkconstabularymalevoicechoir.co.uk
Thur 8 Aug	IAA. Lunchtime Concert. Zephyr Baroque	Museum Street, Methodist Church	1.00pm	www.ipswich-arts.org.uk
STOP PRESS. Fri 21 Jun. The WEA host a number of events in Ipswich for Suffolk Day Tel 0300 303 3464. Details on www.ipswich-arts.org.uk				